

Bowel cancer is also frequently known as colorectal cancer. Bowel cancers start in the innermost layer - the lining. Most begin as a small growth called a polyp or adenoma. If left untreated, these may become cancerous and grow into the muscle layers under the lining of the bowel and then through the bowel wall. The cancer can then spread into organs.

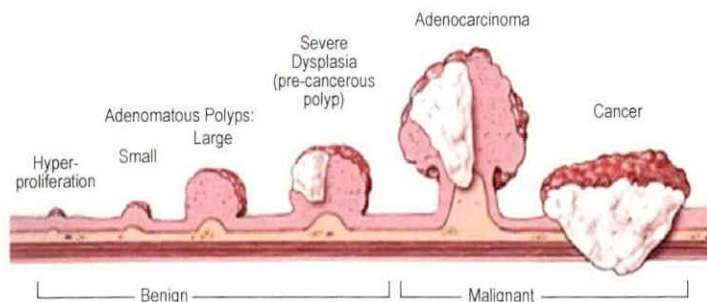
Symptoms of bowel cancer can be varied but usually consist of the following:

- Bleeding from the back passage (rectum) or having blood in your stool
- A change in normal bowel habits
- A lump that your doctor can feel in your back passage or abdomen
- A feeling of needing to strain in your back passage (as if you need to pass a bowel motion), even after opening your bowels
- Losing weight
- Pain in your abdomen or back passage
- A lower than normal level of your blood count (anaemia)

To diagnose bowel cancer, your general practitioner or Gastroenterologist will need to examine you. The tests you have depend on your specific situation and may include, general tests to check your overall health and body function, tests to find cancer, tests to see if the cancer has spread (metastasised).

These include DRE (Digital Rectal Examination), blood tests, FOBT (Faecal occult blood test), Barium Enema or Colonoscopy. If these tests show that you do have a bowel cancer, you may be sent for further test or staging to see if the cancer has spread to other areas.

BOWEL CANCER



Colonoscopy is the most accurate test in diagnosing bowel cancer.

Treatment of bowel cancer will depend on your staging results, but will involve surgery to remove the cancer. Your treatment team may be made up of a number of specialist staff such as:

- Colorectal surgeon who diagnoses and operates on bowel cancer
- Gastroenterologist who specialises in the digestive system
- Medical and radiation oncologists who prescribe and coordinate the course of chemotherapy, and radiotherapy
- Cancer nurses
- Other allied health professionals, such as a dietician, social worker and occupational therapist



Dr. Qurat ul Ain (Anny) Rizvi

Dr. Brindi Rasaratnam

ABOUT

Our gastroenterology services offer patients a comprehensive range of diagnostic and therapeutic services with a focus on gastroscopy, colonoscopy and capsule endoscopy. Our team is dedicated to patient care and strives to make a patient's experience as comfortable as possible.

SERVICES

- Consultation
- Colonoscopy
- Capsule Endoscopy
- Intestinal Ultrasound
- Liver Fibrosis Ultrasound
- EUS
- ERCP
- Gastroscopy
- Breath Testing (Lactose/Fructose/Helicobacter)

BOWEL CANCER

Dr. Brindi Rasaratnam
Dr. Qurat ul Ain (Anny) Rizvi

(03) 9790 0188

reception@mdcgastro.com.au